

# The Power of Information without Boundaries



## iBOLT Business and Process Integration Platform

*“ To realize our vision of ‘Tecan in every laboratory’, we need to make sure that all of our company’s data is easily available to the relevant members of staff at all levels of our organization. iBOLT is a crucial part of our strategy for reaching that goal. ”*

*Günter Frenzel,  
Business Process Architect,  
Tecan Group AG*

### How is integration vital to my business?

To make the right decisions in business you need a full and concise picture of your organization’s activity. If you haven’t yet synchronized your business IT applications, then vital information is not being shared between your different inter-company departments. And that’s bad news for productivity, competitiveness and the overall success of your enterprise.

**The solution lies in creating an integrated business environment with automated processes.** With integration, management gain a fuller view of their overall business, planners can better prepare for the future, and sales staff can leverage previously unavailable account information to improve their sales. Human errors and manpower wastage are reduced as information no longer needs to be manually re-entered from screen to screen. **Once integrated, the information within your separate business applications flows exactly to where it’s needed and remains updated in real-time.**

# The Power of Information without Boundaries

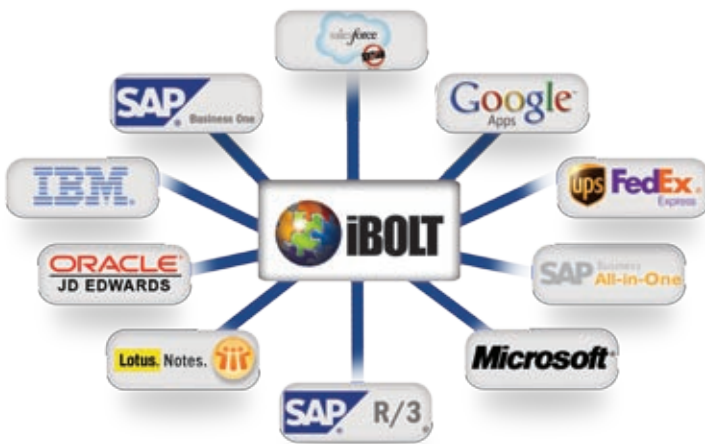
## Attuned to your unique application mix

iBOLT quickly and cost-effectively integrates your various applications running on diverse databases, operating systems, and platforms.

Featuring a large range of certified optimized connectors and adaptors, iBOLT can connect a wide selection of the world's leading ERP, CRM, Accounting, Supply Chain, Enterprise Applications, Web and Wireless systems. iBOLT works natively with systems like SAP Business One, SAP Business All in One, SAP R/3, Salesforce.com, Oracle JD Edwards, IBM i applications and databases (AS/400), Lotus Notes applications, forms and databases, Health Care systems with HL7, EDI systems, and many more.

iBOLT features an unrivaled level of built-in connectivity and a world-class range of adaptive toolkits allowing you to integrate a whole variety of standards and databases including Web services, messaging, FTP and directories, .NET code, Java code, http, databases, data-mapping and more.

**Special editions of iBOLT are available for extending the capabilities of the most commonly used ERP and CRM packages including:**



## Faster, more effective integration

**iBOLT is code free** and benefits from **over 25 years of business application development experience**. The result is a comprehensive integration technology stack, featuring a graphical, wizards-based approach, guaranteeing you faster, more powerful and more cost-effective integration, whatever the business scenario.

## Delivering integration on-time and on-budget

Time, or lack of it, is the number one reason why IT related projects fail today. **iBOLT creates both simple and complex business processes by letting you drag, drop and configure your desired components, so you can focus on your business rather than working through pages of hard code**. Once configured, your visual flow can be simply activated and deployed to achieve results **between 5 and 10 times faster** than other technologies. With iBOLT, you finish your IT integration project on-time and on-budget.

## A common language for business managers and IT professionals

In today's markets, business goals, targets and rules are changing all the time. For integration to keep up you need a tool that's agile and flexible to change, even in the most complex scenarios.

**Because its code free, iBOLT can create both simple and complex business processes easily** – making it the ideal solution for both business managers and IT specialists alike. Business and technical teams can work together to clearly define and then quickly achieve their goals. With iBOLT integration is practical, usable and value for money, especially when changes are required fast.

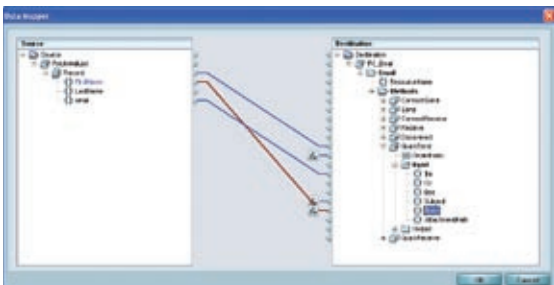
## iBOLT supports:

Platforms	Windows, Linux, System i, Solaris, AIX
Databases	Oracle, MS SQL, DB2, DB2/400, Informix, Pervasive, ODBC
Standards	HTTP/S, FTP/S, POP3/s, IMAP/s, SMTP/s, SNMP, Directory Services (LDAP), WebServices (WSDL), SOAP, XML, TXT, IDOC, RFC, HL7
Middleware	WebSphere MQ, MSMQ, JMS, WebSphere, WebLogic, JBOSS, Sun
Component Framework	.NET, Java, uniPaaS
Paradigms	SOA, Loosly Coupled, Event Driven, Task Driven, Long Transaction
Legacy Connectivity	Interfaces with most standard legacy protocols
Front End	GUI, HTML, WML, XSLT, mobile





iBOLT's Business Flow Editor allows you to easily and intuitively drag, drop and configure your business processes



iBOLT's intuitive Data Mapper allows you to easily transform data from multiple sources to multiple destinations including XML, SQL Tables, Flat files, Flow Variables etc.



# iBOLT

## Why is integration easier with iBOLT?

- **Code free**, no complex code writing necessary
- **Large library** of pre-built components
- **Drag & drop functionality** for easy configuration of your business processes
- **Visual Data Mapper** transforms information regardless of format
- **Step-by-step wizards** simplify integration
- **Open architecture** lets you connect to every database, platform, file format etc.
- **Intuitive** graphical user interface
- Powerful **built-in security and encryption tools**
- **Online monitoring** capability
- **Automated handling** of exceptions and errors in business processes
- **Easily scalable** from departmental collaboration to company and enterprise workflows
- **Encryption & security capabilities** extend to both data and business processes
- **Out-of-the-box SOA** for any organizational scale
- Certified and Gold SAP Software Solution partner
- Certified Salesforce.com AppExchange partner

## Business benefits of iBOLT

- **Real-time full view** of customer information
- **5-10 times faster** implementation
- **Enhanced productivity**
- **More agility and flexibility** to changing business needs
- **Improved time-to-market**
- **Automate workflows** and manual processes & reduce instances of human error
- **Better management** of customer information
- **Less project risk**
- **Lower budget** requirement
- **Out-of-the-box management** of data exchange

## Magic Software's value advantage

- Proven technology with 25 years of experience
- Thousands of customers worldwide
- Proven channel-partner success with global network of over 2500 ISVs, hundreds of system integrators, VADs/VARs, consulting and OEM partners
- Award-winning technology
- Recognized by the leading industry analysts
- Global presence
- A leading SAP-certified integration partner
- Certified Salesforce.com AppExchange partner
- Optimized connectors for SAP, Salesforce.com, Lotus Notes, IBM i, HL7, and others

## About Magic Software Enterprises

Magic Software Enterprises Ltd. (NASDAQ: MGIC) is a global provider of mobile, cloud and on-premise application platform solutions, and business and process integration solutions. Magic Software has 14 offices worldwide and a presence in more than 50 countries, with a global network of ISVs, system integrators, value-added distributors and resellers, as well as consulting and OEM partners. The company's award-winning code-free solutions give partners and customers the power to leverage existing IT resources, enhance business agility and focus on core business priorities. Magic Software's technological approach, product roadmap and corporate strategy are recognized by leading industry analysts. Magic Software has partnerships with global IT leaders including SAP AG, Salesforce.com, IBM and Oracle. For more information, visit [www.magicsoftware.com](http://www.magicsoftware.com).

[www.magicsoftware.com](http://www.magicsoftware.com)

### Magic Software's Worldwide Offices

#### Corporate Headquarters

Magic Software Enterprises Ltd.  
Tel: +972 3 538 9292

#### UK

Magic Software Enterprises UK  
Tel: +44 1344 667 000

#### France

Magic Software Enterprises France  
Tel: +33 1 49 10 58 58

#### Distribution

Magic Software Enterprises  
Tel: +972 3 538 9480

#### North and Latin America

Magic Software Enterprises Inc.  
Tel: +1 949 250 1718  
[info@magicsoftware.com](mailto:info@magicsoftware.com)

#### Germany

Magic Software Enterprises Germany  
Tel: +49 89 962 730

#### Hungary

Magic Software Enterprises (Onyx) Hungary Ltd.  
Tel: +36 1 216 9910

#### South Africa

Magix Integration  
Tel: +27 11 258 4442

#### Japan

Magic Software Japan K.K.  
Tel: +81 3 5365 1600

#### Benelux

Magic Software Enterprises Netherlands  
Tel: +31 30 65 66 266

#### Israel

Magic Software Enterprises Israel  
Tel: +972 3 538 9389

#### India

Magic Software Enterprises India Pvt. Ltd.  
Tel: +91 9886 455 398

**SAP** Certified  
Integration with SAP Applications



**SAP** Certified  
Integration with SAP NetWeaver®

SAP Innovation  
2005 Award

SAP Quality  
2006 Award

SAP Leadership in Innovation  
2007 Global Award

appexchange™



Server Proven™



ORACLE PARTNER

Do it Once. Do it Right.  
**MAGIC**  
SOFTWARE

Magic Software provides the information in this brochure as is and without any warranties. In no event will Magic Software be liable for any loss of profit, or for any damages of any kind whether based in contract, negligence or other sort. Magic Software may make changes to this brochure and the product information and prices at any time without notice and without obligation to update the materials contained in this brochure. Magic is the trademark of Magic Software Enterprises Ltd. All other trademarks are the trademarks of their respective owners.  
© 2009 Magic Software Enterprises Ltd. 4320-36000 Q3/2011

[www.magicsoftware.com](http://www.magicsoftware.com)