



JDE Connect Reliably Extends Oracle JDE to Your Business

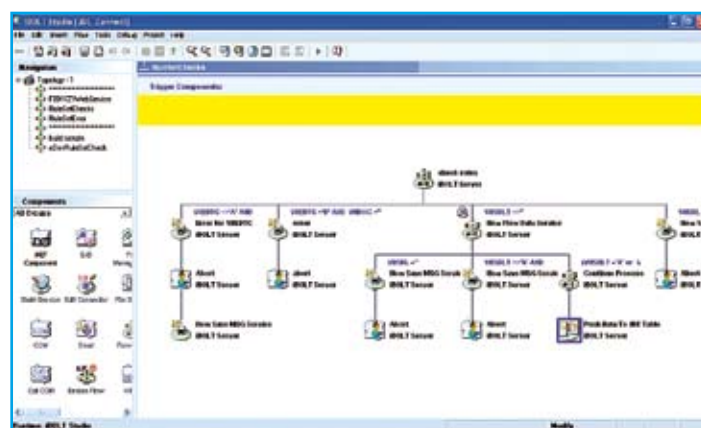
JDE Connect puts more than 50 iBOLT adapters, wizards, services and methods at your fingertips to create continuous business processes based on JD Edwards.

JDE Connect is the only complete connectivity solution that extends JD Edwards and integrates it across all of your organizational business processes. JDE Connect enables business analysts, system architects and JDE project managers to design and implement robust business processes that connect to the web, integrate other applications such as CRM, logistics and HR systems, and respond to business events on demand. You can use JDE Connect to automate your business processes, routinely handle exceptions, and better align IT operations to the needs of your business. Uses include...

- **Interface non-JDE applications with your General Ledger.**
- **Integration to new or existing eCommerce websites.**
- **Order tracking and logistics management over the Web.**

Additional uses include:

- Integration with CRM and Sales Force Automation systems, and/or service calls via the web.
- Catalog and item synchronization.
- Small package delivery service integration (UPS, FedEx, etc.).
- Chart of account consolidation to other systems/companies.
- Coexistence between World, Enterprise One and future Oracle Fusion Applications.
- Automation of routine tasks.
- Straight-through-processing.
- Improved audit trails for business processes extending outside of JDE World.
- Scheduling of batch processes, including steps in other systems.
- Spool file integration and data queue access.
- Accessibility, triggers and alerts in support of compliance initiatives.



JDE Connect manages exceptions routinely.

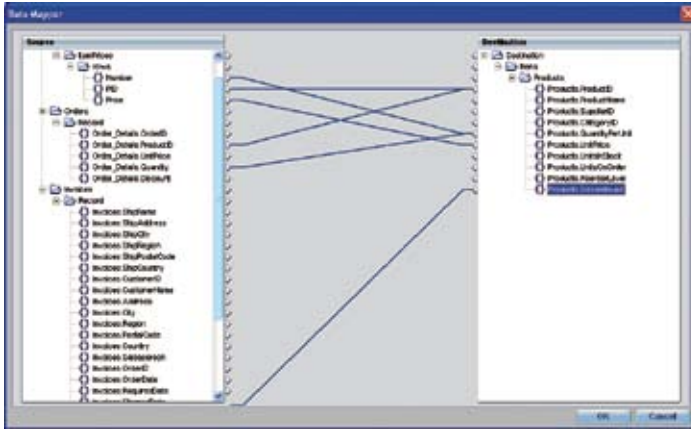
- Email integration and notification.
- Extension to mobile standards such as SMS.
- Data formatting and integration (PML, etc.)
- Any-to-any connectivity.

JDE Connect brings you the power of iBOLT, connected directly to your JDE system.

- Safe and secure access to JDE data.
- Straightforward definition of event triggers.
- Web integration.
- Transformation between data formats.
- Messaging and routing (WebSphere MQ, MSMQ or JMS).
- Service Enablement via 2-way Web Services.
- Calls to RPG, COBOL and other programs.
- Composite Processes with .NET and J2EE.
- i5OS and OS/400 system commands
- Process monitoring and alerts.
- XML integration (ACORD, GJXML, etc.)
- EDI integration (EDIFACT, HIPAA, etc.)
- Email Integration (MS Mail, Lotus Notes/Domino, etc.)



JDE CONNECT



Automated data mapping handles even the most complex transformations.

And JDE Connect delivers these benefits in a straightforward manner using visual editors that define the business environment, processes and specific steps surrounding your JDE World system. With JDE Connect, connectivity is never in question because of the large library of included services, methods, wizards and adapters. You gain standards-based integration of JDE World with a broad range of technologies. JDE Connect utilizes a robust and scalable approach to ensure data and operational integrity. Management of business processes is always straightforward and secure because JDE is a complete solution that enables a best practices approach.

Magic Software Enterprises

Magic Software Enterprises, develops, markets and supports software technology that enables enterprises to accelerate the process of integrating, building and deploying applications. Magic technology, applications and professional services are available through a global network of subsidiaries, distributors and Magic solutions partners in approximately 50 countries.

Oracle, JDE, JD Edwards World, and JD Edwards Enterprise One are trademarks of Oracle Corporation. System I, iSeries,

i5OS, and OS/400 are trademarks of International Business Machines. Magic Software Enterprises, eDeveloper, iBOLT, and JDE Connect are trademarks of Magic Software Enterprises, Ltd. All other names are trademarks of their respective owners. © Magic Software Enterprises, Ltd. 2006, All Rights Reserved. This brochure may contain forward looking statements and is not intended as investment advice. Descriptions of capabilities may differ from the actual performance and capabilities of the software. Use of the software is governed by license agreements. Magic provides the information in this brochure as is and without any warranties. In no event will Magic be liable for any loss of profit or for any damages of any kind whether based in contract, negligence or other tort.

System Information

Server: IBM System i, (formerly IBM iSeries and AS/400) (Server Engine). Compatible servers are available for process extensions to Windows, UNIX (AIX, Solaris, and HP-UX), and Linux.

OS: OS/400 V4.5 and above as well as i5OS on IBM System i (iSeries) servers with PowerPC processors. Requires PASE.

Database: DB2/400 on System I (iSeries, AS/400). Other platforms: DB2, Oracle, MSSQL, ODBC, Pervasive.

Web Server: HTTP original and HTTP powered by Apache 2.0.47.

Middleware: For System i: IBM WebSphere® MQ 5.3; JMS; JRE 1.4.2; LDAP V.2 and V.; SOAP 1.1; SNMP V.1 and V.2.; IBM WebSphere Application Server.

For use with: Oracle JD Edwards World 7.x/8.x, Oracle JD Edwards Enterprise One.

Contact Information

For information about JDE Connect, iBOLT and Magic Software, call (800) 345-6244 or send email info@magicsoftware.com.



USA / Canada
Magic Software Enterprises Inc.
Tel: (1) 800-345-6244
(1) 949-250-1718
Fax: (1) 949-250-7404
info@magicsoftware.com

Germany
Magic Software Enterprises
Germany
Tel: (49) 89-962-73-0
Fax: (49) 89-962-73-100
info@magicsoftware.com

India
Magic Software Enterprises India
Pvt. Ltd.
Tel: (91) 20-401-1211
Fax: (91) 20-581-5500
info@magicsoftware.com

Italy
Magic Italia s.r.l.
Tel: (39) 02-295-364-64
Fax: (39) 02-295-125-50
info-it@magicsoftware.com

Netherlands
Magic Software Enterprises
Nederland
Tel: (31) 30-656-6266
Fax: (31) 30-656-6277
info-nl@magicsoftware.com

UK
Magic Software Enterprises (UK)
Tel: (44) 0-1344-667-000
Fax: (44) 0-1344-667-001
ukinfo@magicsoftware.com

France
Magic Software Enterprises France
Tel: (33) 1-49-04-1427
Fax: (33) 1-49-04-1415
infofrance@magicsoftware.com

Hungary
Magic Software Enterprises (Onyx)
Hungary Ltd.
Tel: (36) 1-216-9910
Fax: (36) 1-216-7271
infohungary@magicsoftware.com

Israel
Magic Software Enterprises Ltd.
Tel: (972) 3-538-9400
Fax: (972) 3-538-9410
bestcare@magicsoftware.com

Japan
Magic Software Japan K.K.
Tel: (81) 3-5365-1600
Fax: (81) 3-5365-1630
japan_solution@magicsoftware.com

Spain
Magic Software Enterprises Spain
Tel: (34) 91-535-9180
Fax: (34) 91-535-8970
info-es@magicsoftware.com

International
Magic Software Enterprises Ltd.
Tel: (972) 3-538-9292
Fax: (972) 3-538-9333
sales@magicsoftware.com